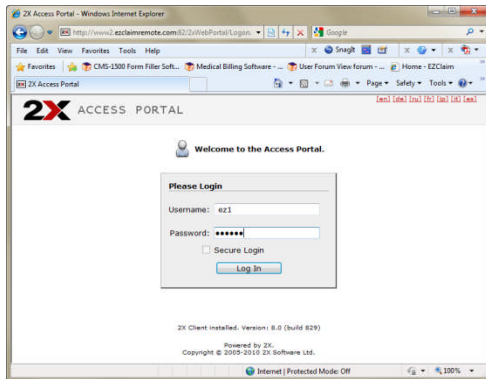
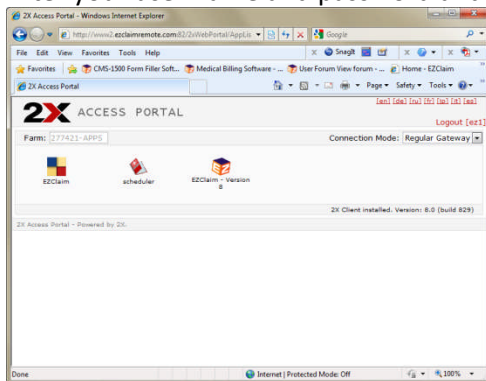


Logging into the Portal

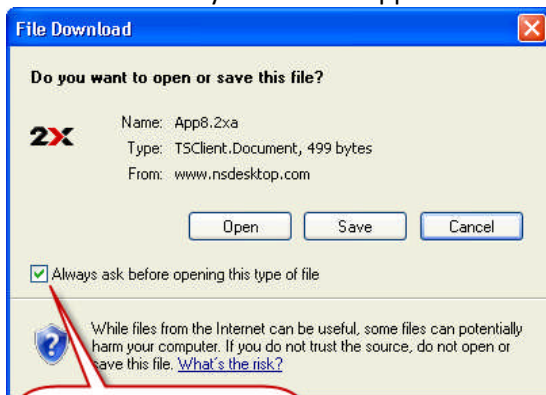
1. Visit the [www\(x\).ezclaimremote.com](http://www(x).ezclaimremote.com) link that EZClaim has assigned to you. It will be [http://www\(x\).ezclaimremote.com](http://www(x).ezclaimremote.com), where (x) is a number assigned by EZClaim. (e.g. <http://www2.ezclaimremote.com>)



2. Enter your user name and password and click Login



3. You can now use your remote applications



You can uncheck this box to skip this warning

4. When you click on your remote application, you may receive a warning message. You can uncheck this option and click Open. You will not be prompted with this screen again.