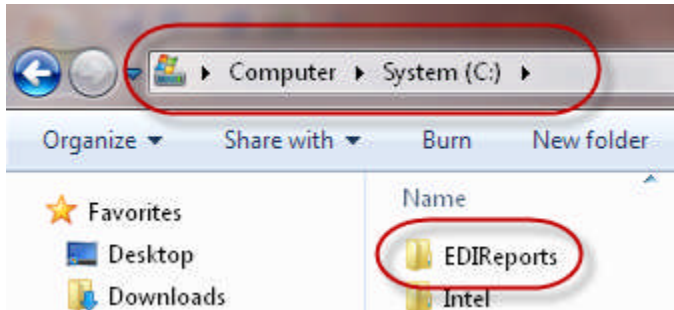
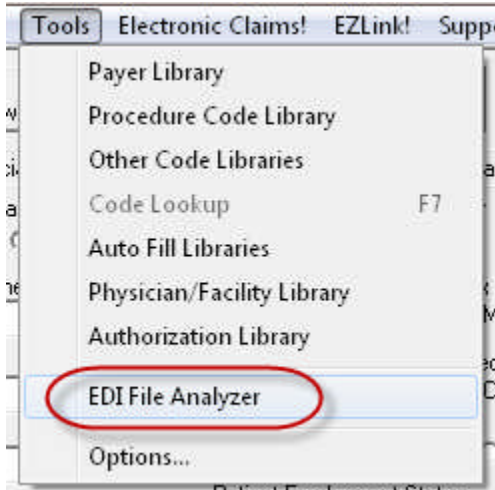


## Analyzing an EDI file with EZClaim Remote

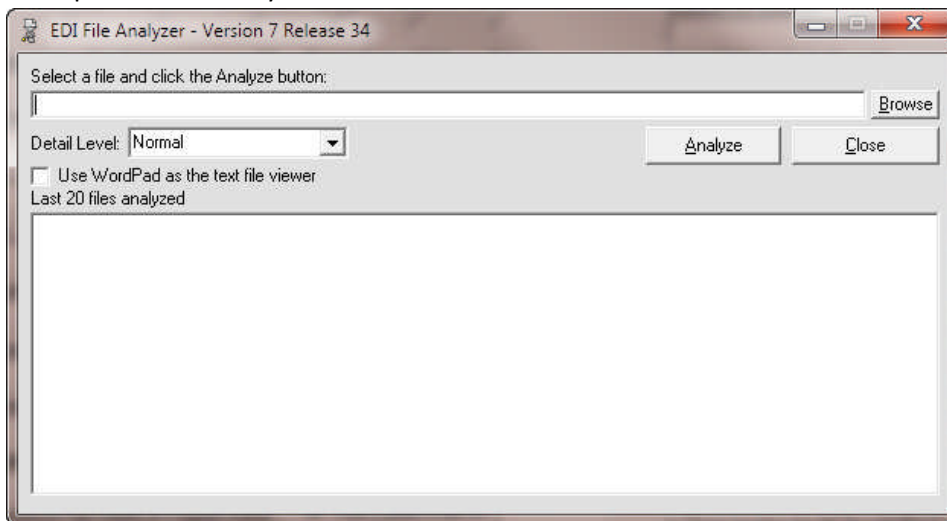
1. **IMPORTANT:** Determine where the EDI report file is located on your computer. We suggest saving report files into a simple folder like C:\EDIReports



2. Log into EZClaim Remote to open EZClaim.
3. Click the Tools menu > EDI File Analyzer...

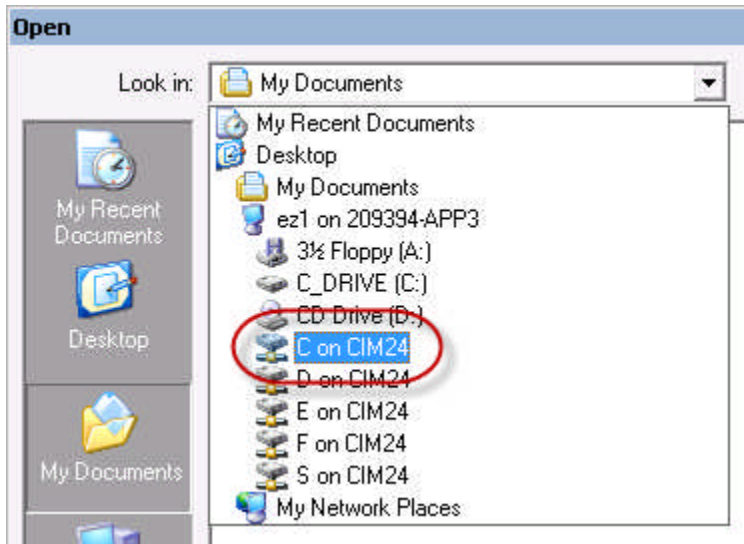


4. ...to open the file analyzer

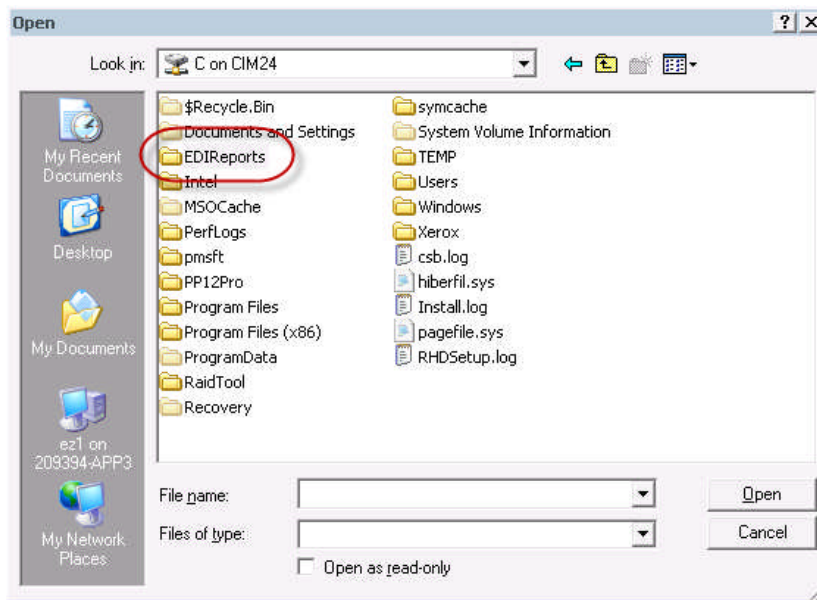


5. Click the Browse button to locate your EDI report

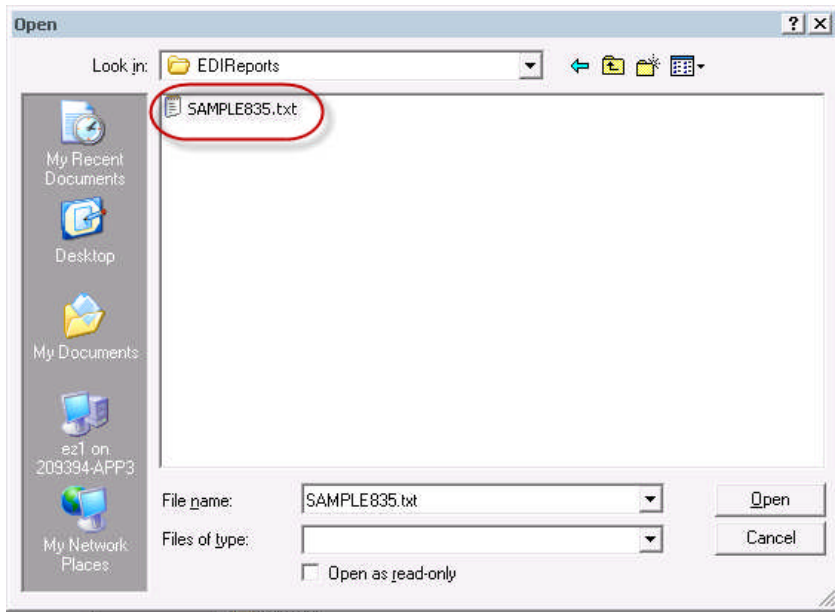
6. In the open box, double click '**C on <NAME>**' (<NAME> will be the name of your computer)



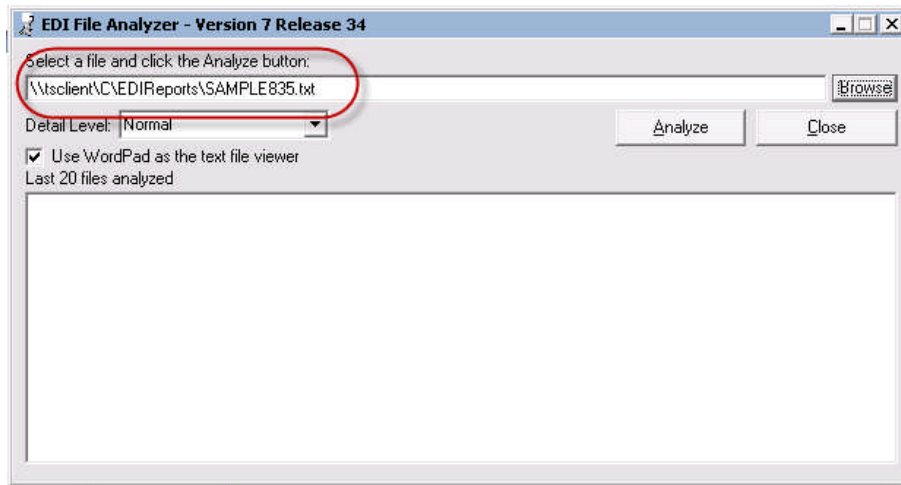
7. Once the C drive loads, double click the **EDIReports** directory



8. Then double click the EDI file you would like to analyze



9. Once you double click the file, the file name will load into the File Analyzer. Note that it begins with \\tsclient\c, tsclient is just the name of your local computer when running EZClaim remote.



10. Click the  button to analyze the file.