

2x Setup for Windows

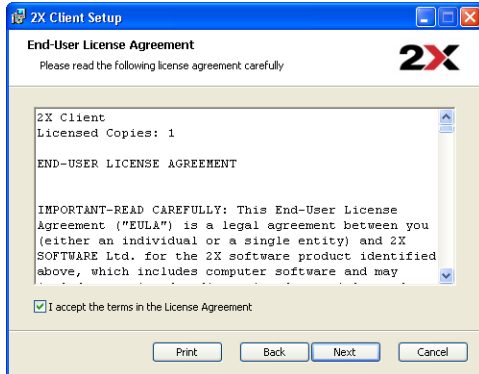
Use this procedure when you would like to setup additional computers to access EZClaim Remote applications.

1. Download the installation from:
<http://www.ezclaim.com/remote>

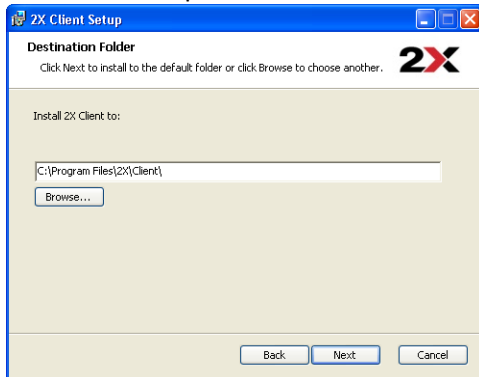
2. Click the 2XClient link and run the setup.



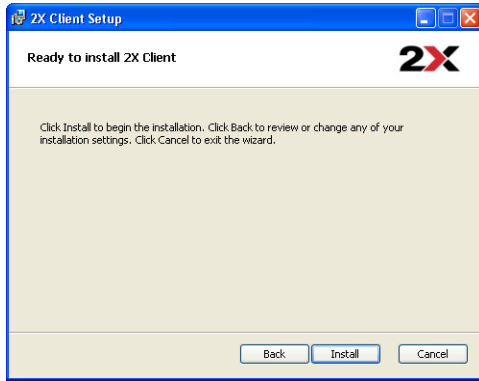
3. Click Next to continue.



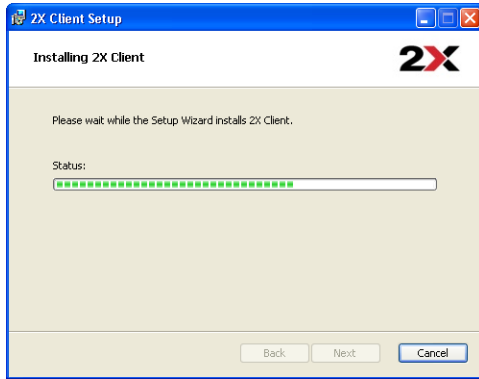
4. Click the 'I accept the terms...' check box then click Next



5. Click Next to continue



6. Click Install



7. If you see a message regarding an old version of the Microsoft RDP Control, go ahead and click Yes to install the newer one. Then click OK.

