

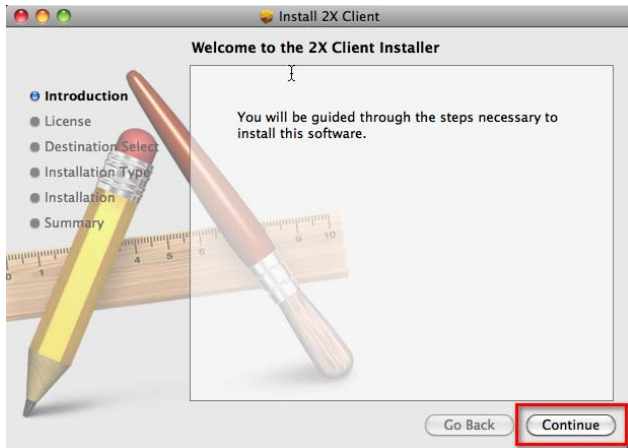
2x Setup for Mac

Use this procedure when you would like to setup additional computers to access EZClaim Remote applications.

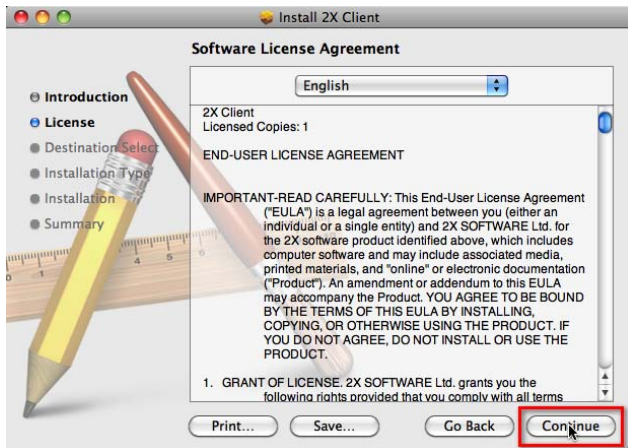
1. Download the installation from:
<http://www.ezclaim.com/remote>
2. Click the **2XClient** link and run the **2xClient.dmg** file
3. Double-Click the **2X Client.pkg** icon



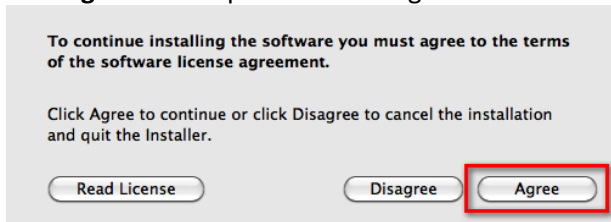
4. Click **Continue**



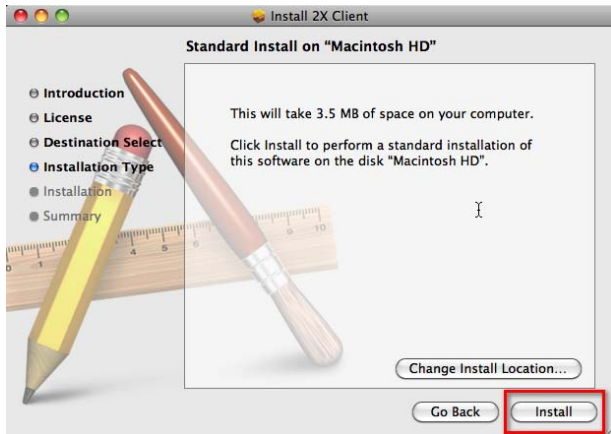
5. Click **Continue**



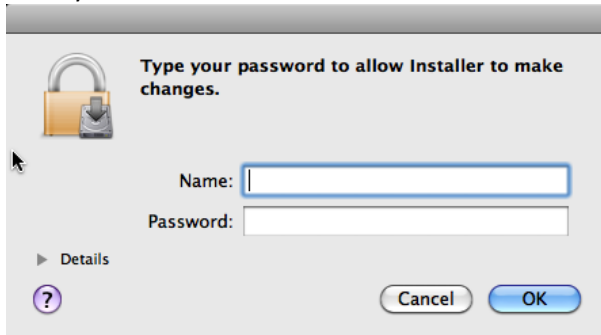
6. Click **Agree** to accept the license agreement



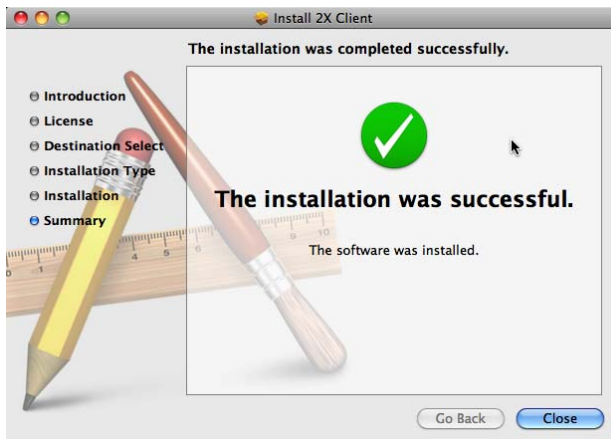
7. Click **Install**



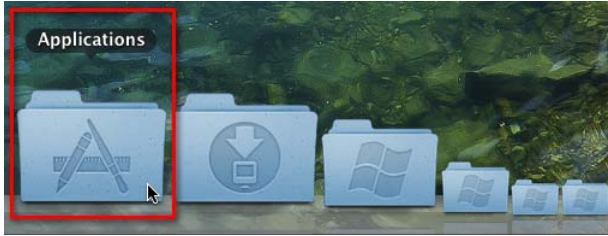
8. Enter your Mac User Name and Password then click **OK**



9. Click **Close** when the installation successful screen appears



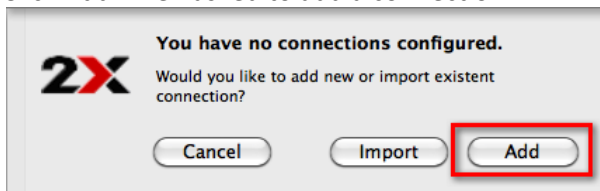
10. Open the 2X application from the Applications folder.



The 2X program icon will look like this.

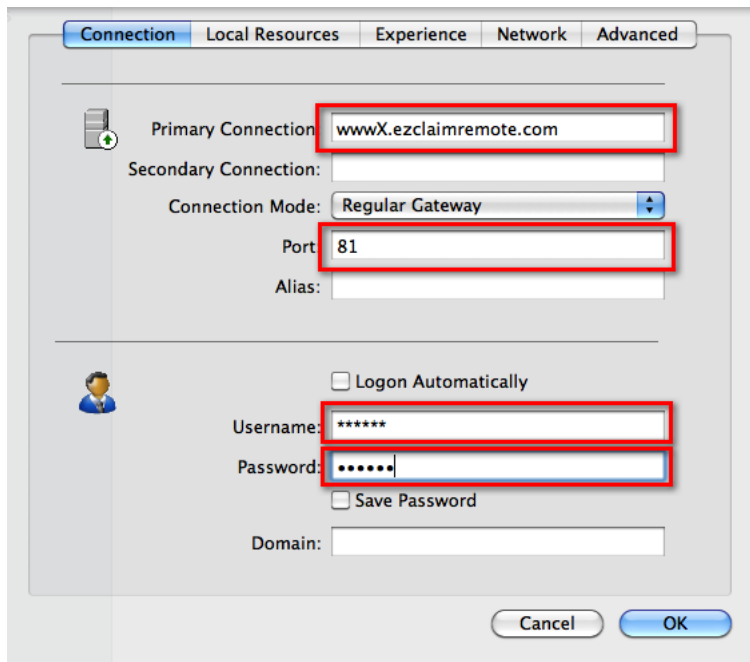


11. Click **Add** when asked to add a connection

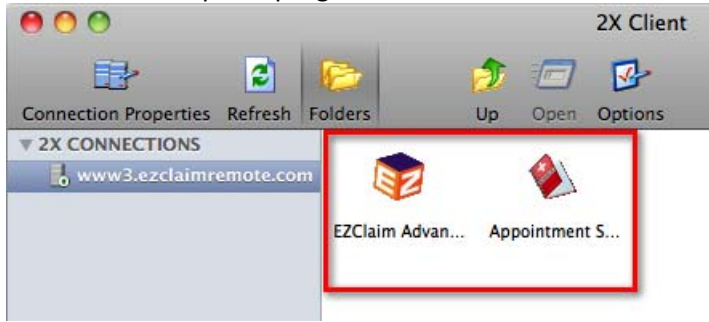


12. Configure the new connection.

- Enter the Primary Connection: **www(x).ezclaimremote.com**, where **(x)** is a number assigned by EZClaim. (e.g. www2.ezclaimremote.com)
- Enter 81 for the Port
- Enter the Username and Password assigned by EZClaim.
- Click OK.



13. Double-click to open a program.



14. You can open the 2X client again by clicking the 2X icon at the top of the screen and choosing Browse Applications.

